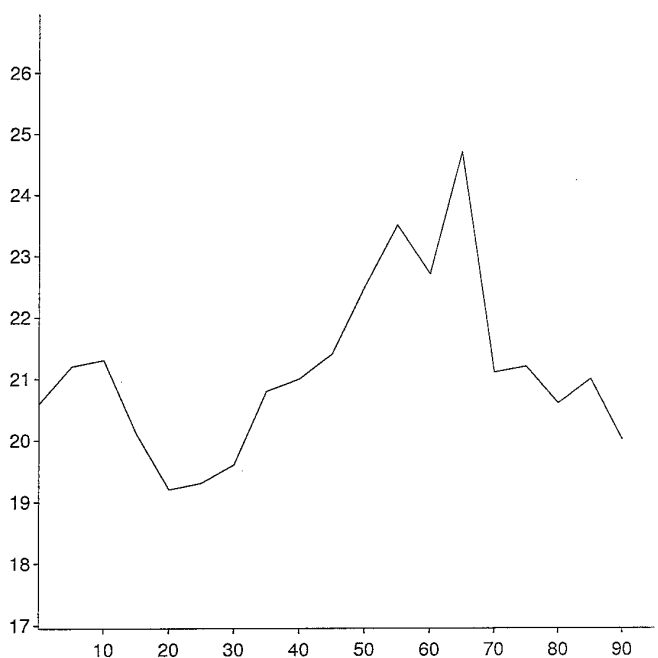
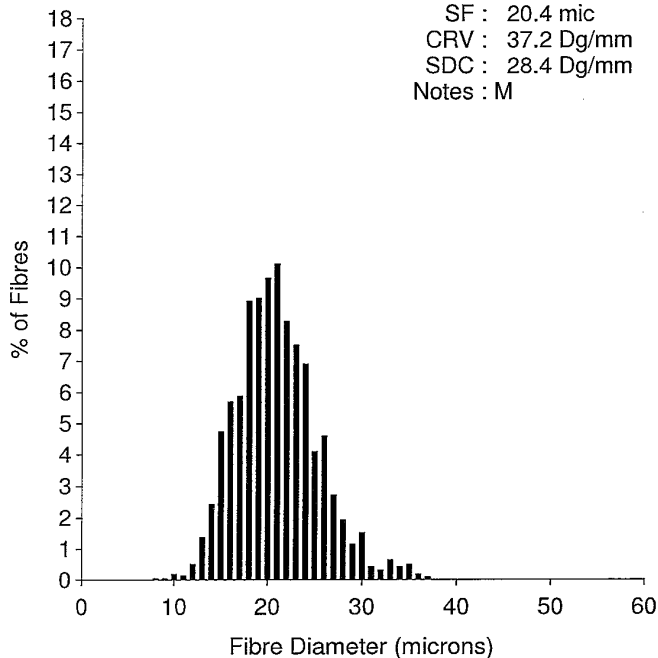


EID : Winter's A  
 EarTag : Lisi  
 Micron : 21.0 mic  
 SD : 4.4 mic  
 CVD : 20.8 %  
 CEM : 8.2 mic  
 <15 : 4.7 %  
 CF : 97.4 %  
 SF : 20.4 mic  
 CRV : 37.2 Dg/mm  
 SDC : 28.4 Dg/mm  
 Notes : M

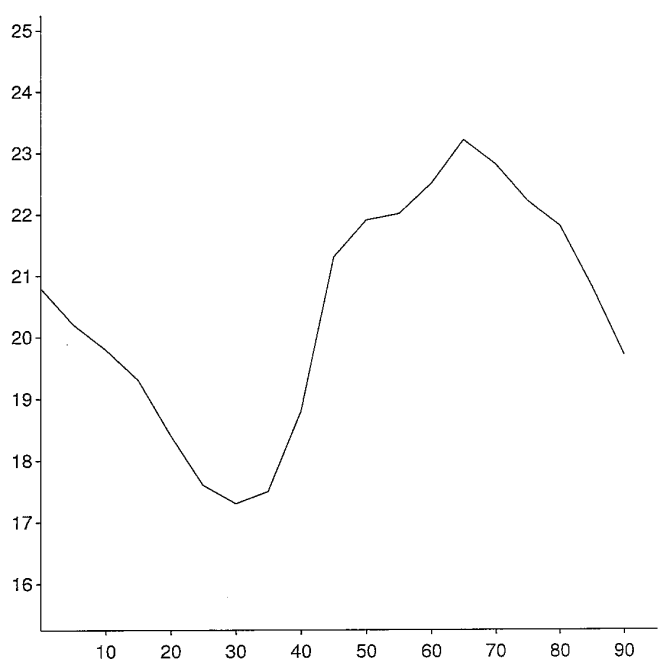
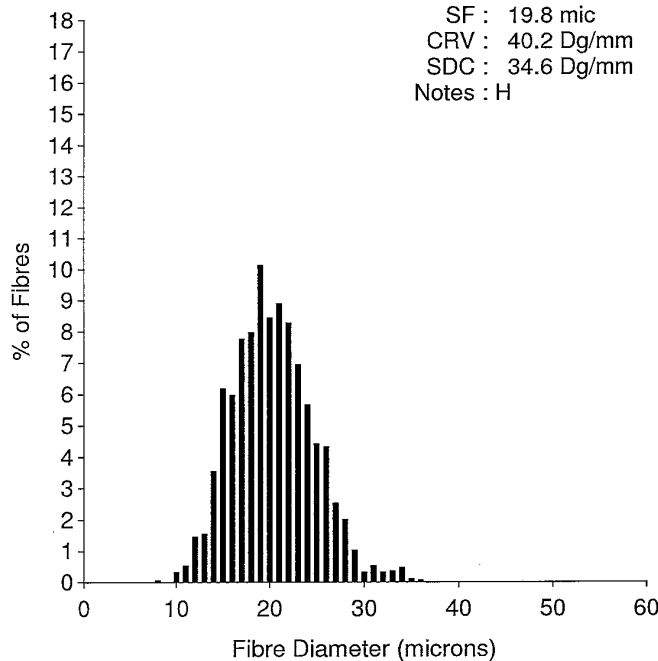
Staple Len : 95.0 mm  
 Min Mic : 19.2 mic  
 Max Mic : 24.7 mic  
 SD Along : 1.40 mic



OFDA 2000 REPORT : SORTED BY EID/TAG  
 Samples 02/05/2019 (Trim High On) (153Records)

EID : Winter's A  
 EarTag : Lisi  
 Micron : 20.3 mic  
 SD : 4.3 mic  
 CVD : 21.2 %  
 CEM : 7.8 mic  
 <15 : 7.4 %  
 CF : 98.2 %  
 SF : 19.8 mic  
 CRV : 40.2 Dg/mm  
 SDC : 34.6 Dg/mm  
 Notes : H

Staple Len : 95.0 mm  
 Min Mic : 17.3 mic  
 Max Mic : 23.2 mic  
 SD Along : 1.90 mic



EID : Winter's A  
 EarTag : Lisi  
 Micron : 21.5 mic  
 SD : 4.7 mic  
 CVD : 22.0 %  
 CEM : 8.8 mic  
 <15 : 5.8 %  
 CF : 96.1 %  
 SF : 21.1 mic  
 CRV : 36.9 Dg/mm  
 SDC : 29.3 Dg/mm  
 Notes : V

Staple Len : 105.0 mm  
 Min Mic : 20.1 mic  
 Max Mic : 24.2 mic  
 SD Along : 1.00 mic

